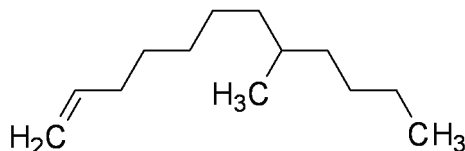




Certificate of Analysis

Structure:




Product Number BM1740
Batch Number M17401805
Product Name 8-Methyldodec-1-ene (contains 8-ethylundec-1-ene)

CAS Number N/A
Molecular Formula C₁₃H₂₆
Molecular Weight 182.35 g / mol

ANALYSIS	SPECIFICATION	RESULTS
Appearance	Colourless to yellow oil	Colourless oil
GC - Ethyl acetate	≥95%	98.1%
NMR - CDCl₃	≥95%	≥98%
Notes	<i>Purity: sum of isomeric materials (8-methyldodec-1-ene and 9-methyldodec-1-ene is ≥95%</i>	
Storage Conditions	Store ≤ 25°C	

Prepared by:


Signature

Mousa Asadi

9/04/2018

Print Name

Date

Checked by:


Signature

Justine Walter

17/04/2018

Print Name

Date

UNITED STATES

Boron Molecular Inc
P.O. Box 12592
Research Triangle Park, NC 27709
Tel: (919)-981-4441 Fax: (919)-981-4442
Email:sales@boronmolecular-usa.com

AUSTRALIA

Boron Molecular Pty Limited
P.O. Box 756
Noble Park, Victoria, 3174
Tel: 61-3-8558 8000 Fax: 61-3-8558 8004
Email:sales@boronmolecular.com